



SRT – High Capacity and High Resolution Size Exclusion Phases

Innovative Surface Chemistry

Column Characteristics

- Silica based packings
- High pore volume, high capacity and high resolution
- Wide range of pore size (100–2000 Å)
- Proprietary surface chemistry
- Negligible non-specific interactions
- Wide applications for synthetic polymers, biological molecules, virus and nanomaterials

Applications

Protein Standards

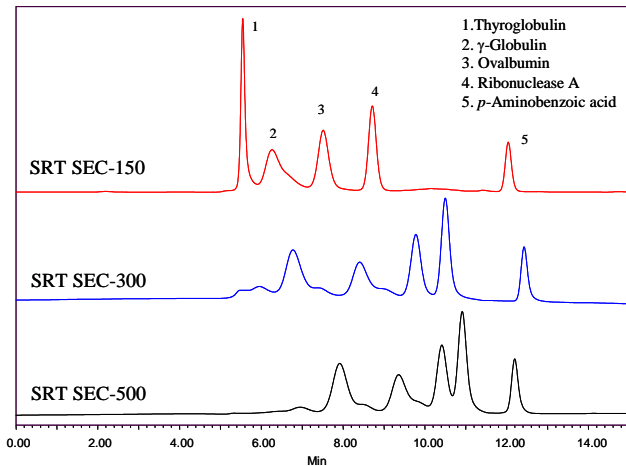


Fig. 1. Column: 4.6x300 mm (5 μ m); 0.15M phosphate, pH 7; Flow rate: 0.35 mL/min; Room temperature; UV214 nm.

BSA Loading

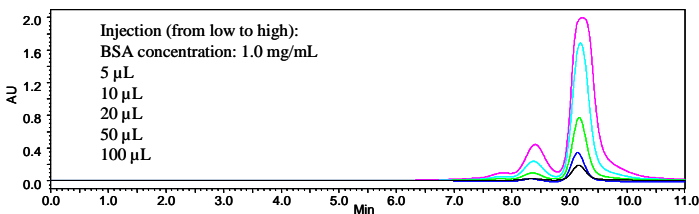


Fig. 1. SRT SEC-300 (5 μ m, 7.8x300mm); 0.15M phosphate, pH 7.0; Flow rate: 1.0 mL/min; RT; UV 214 nm.

Sepax Technologies, Inc.

5 Innovation Way, Newark, Delaware 19711, USA
 Tel: (302) 366-1101 & 1-877-SEPAX-US; Fax: (302) 366-1151
 www.sepax-tech.com; E-mail: info@sepax-tech.com

Separation Profiles of Antibodies

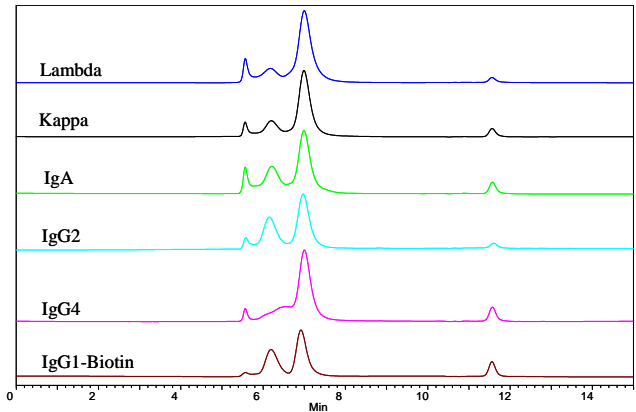


Fig. 2. SRT SEC-150 (5 μ m, 7.8x300 mm); 150 mM PBS, pH 7.0; 1.0 mL/min; UV 214 nm; Injection: 10 μ L (1.0 mg/mL).

Low MW Polysaccharides

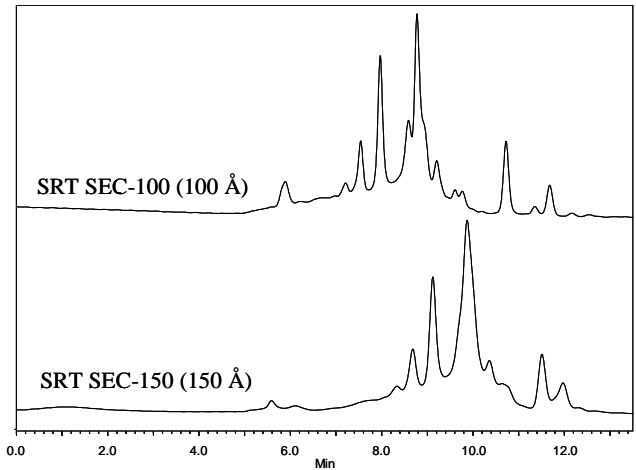


Fig. 3. Column: 4.6x300 mm (5 μ m); 150 mM PBS, pH 7; 0.35 mL/min; Injection: 10 μ L; UV 214 nm; Sample: achyranthes bidentata polysaccharides from plant root extract (MW < 10,000).

Separation of *E. coli* Lysates

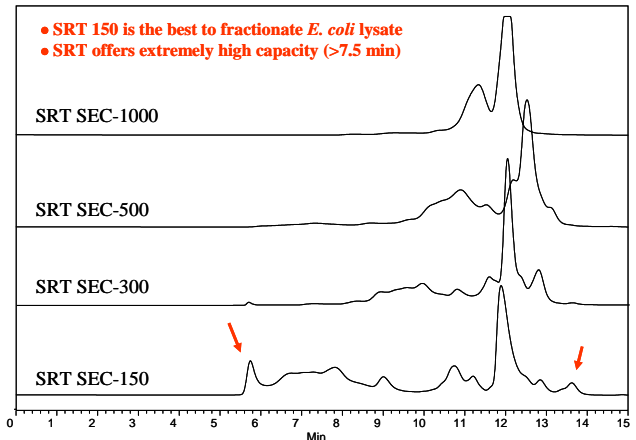


Fig. 4. Column: 7.8x300 mm (5 μ m); 0.15 M PBS, pH 7.0; 1.0 mL/min; UV 214 nm; Injection: 10 μ L (2.5 mg/mL).